

Sheet A-18—CEUS SSC Project GIS Data Summary

CEUS SSC Paleoliquefaction Database

CEUS_PL_DB_CEUSSSC_R0.shp

Data Description: Data representing paleoliquefaction information for large regional data sets in the CEUS. This data layer was compiled to aid in the development of the CEUS seismic source model. Regional data from published and unpublished sources were combined to help constrain magnitudes, locations, and recurrence rates of magnitude earthquakes, for use in the characterization of seismic source zones for the CEUS SSC Project.

Features in the data layer are assigned the location of their respective source regions (KEY attribute) as well as a site name, unique identifier, latitude and longitude, observation type, feature type, age estimates, and other geotechnical, stratigraphic, and chronologic information. Appendix E describes the attributes in the database in detail.

Source (Internet URL, CD/DVD-ROM): Developed as part of the CEUS SSC Project.

Author/Publisher/Year: CEUS SSC Project. Appendix E includes a complete list of the references and data sources cited in the database.

Data Summary: Digital data in Microsoft Excel format were converted into an ESRI point shapefile format. Data are presented in geographic coordinates on the North American Datum of 1983.

Disclaimer or Constraints on Use: No constraints have been identified.

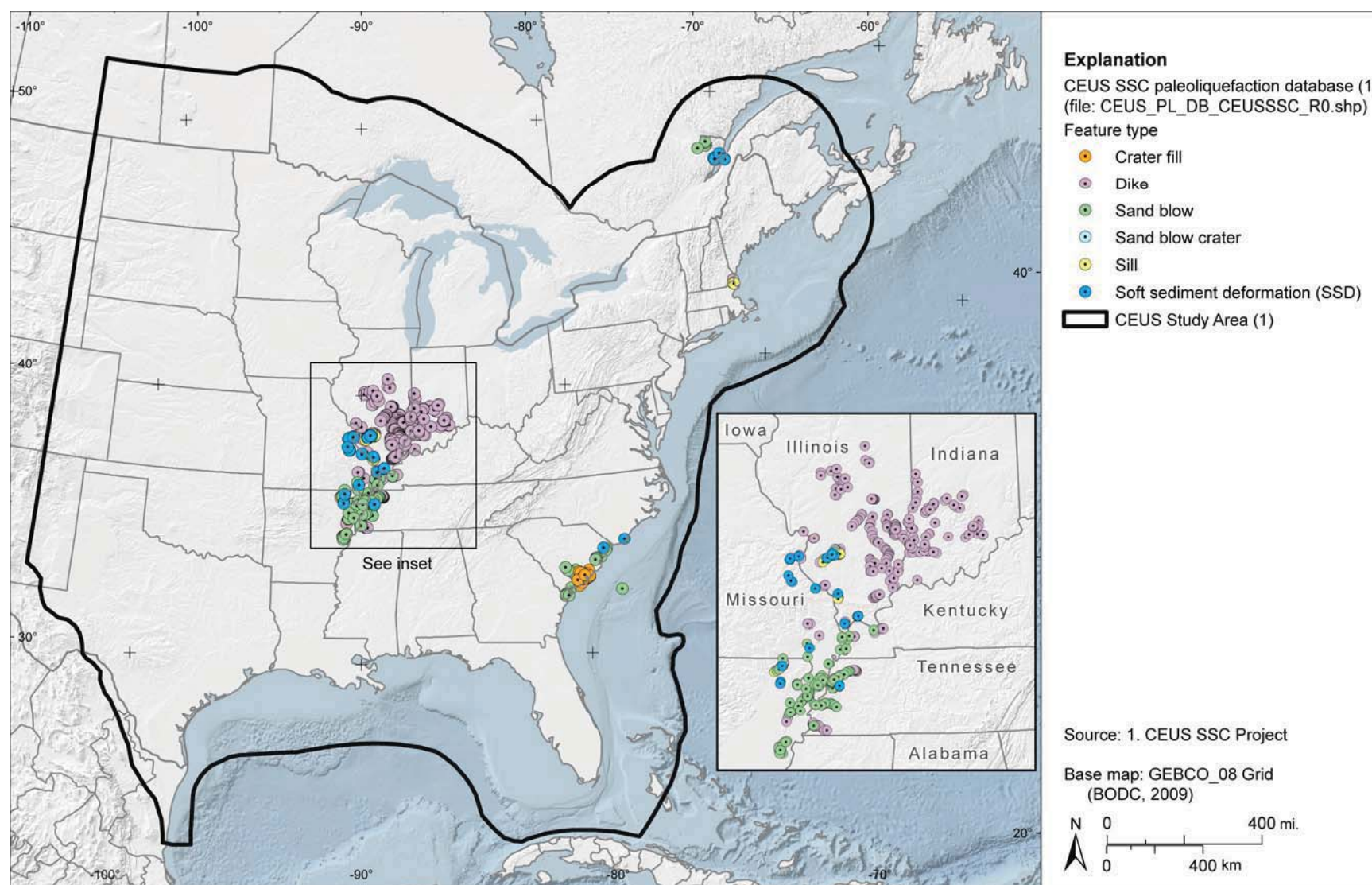


Figure A-47
 CEUS SSC paleoliquefaction database